

Surface-mounted luminaire - Silky matt MIRO® parabolic louvres - direct distribution

Sheet steel housing with welded end faces, rectangular cross section; Housing colour traffic white RAL 9016; Direct light distribution using reflectivity-enhanced MIRO® aluminium parabolic louvres, silk-matt anodised, for computer workstations, omnidirectional glare reduction according to the current DIN EN 12464-1 standard With clear cover made of laminated safety glass; Integrated LED driver design.. Electrical connection and connection of control cable using 5-pole connection terminal with plug-in contacts; Luminous flux in emergency light mode 9619 lm. The aduna clean room luminaire is suitable for direct voltage (0/50Hz), emergency luminaires must have additional marking. Suitable for air purity class ISO 14644-1 Class 2 with excellent to very good results in terms of microbial metabolic potential and chemical resistance.

CHARACTERISTICS

| | |
|-------------------------------|--|
| Order number | 62124026660 |
| EAN number | 4020863384662 |
| Commodity code | 94051190 |
| Certification mark | IP 65, Protection class I, VDU 65°<1000, F, D, IPA, Clean room, HACCP DIN10500/Food/IFS/BRC, Indoor, CE |
| Impact resistance (IK rating) | IK07 (-20°C bis 35°C) |
| Ambient temperatur | ta -20°C to 35°C |
| Special properties | Ready for IoT |
| Warranty period | 7 years |

ELECTRICAL ENGINEERING

| | |
|--------------------------------------|--|
| Controller | Electronic driver DALI2 (2 pcs.) |
| System output | 98W |
| Mains voltage | 230V/50Hz |
| Circuit breakers (inrush current) | 13 pieces/B10, 24 pieces/B16, 25 pieces/C10, 40 pieces/C16 |
| Energy efficiency class/light source | D |

LIGHTING TECHNOLOGY

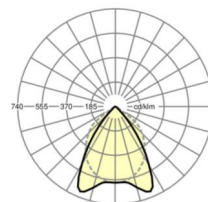
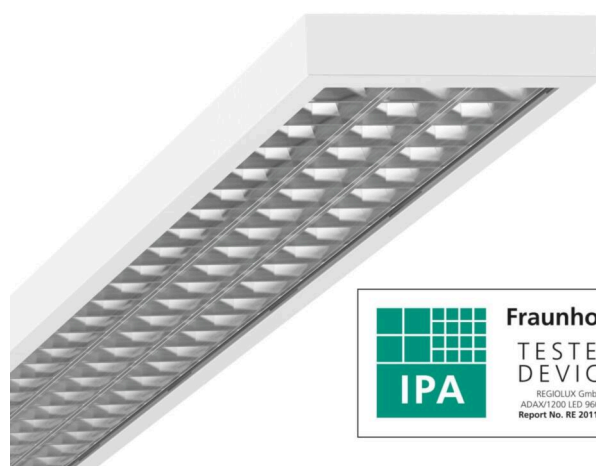
| | |
|---|--|
| Placement | LED, Colour rendering/Light colour CRI ≥ 90 / 4000K |
| Colour tolerance (MacAdam) | 3SDCM |
| Photobiological safety (Luminaire) | RG0 |
| Nominal luminous flux | 9619lm |
| Nominal luminous flux-emergency lighting mode | 9619lm |
| LED service life | 68000h L80/B10 (Tq 35°C), 80000h L80/B10 (Tq 25°C), 37000h L90/B10 (Tq 25°C) |
| Luminaire luminous efficiency | 99lm/W |
| UGR lat./long. | 14.6 / 18.6 |

MECHANICS

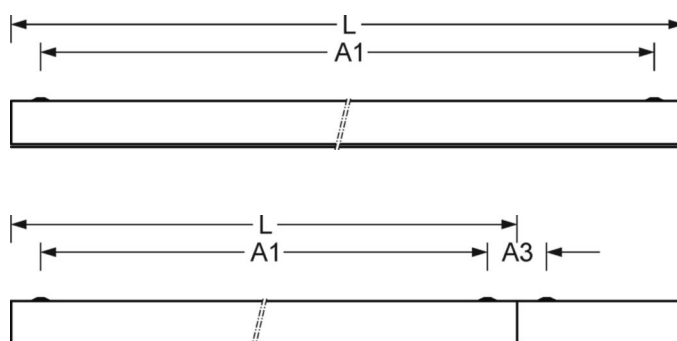
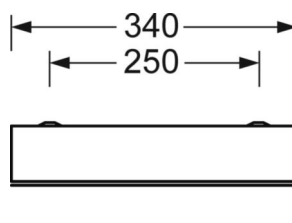
| | |
|------------------------|---|
| Housing colour | traffic white RAL 9016 |
| Dimensions (LxWxH/DxH) | 1173mm x 340mm x 75mm |
| Ceiling system | cut-out ceilings [AD] |
| Weight (net) | 12.6kg |
| Cable entry KE (X/Y) | 65mm/150mm |
| Type of installation | Ceiling-mounted single installation, Ceiling-mounted trunking installation, Installation in clean room ceilings, Ceiling installation individual mounting |

DEEP-LINK

<https://www.regiolux.de/en/article/62124026660>



| | |
|----------------|-----------------------------|
| Reference | LED 9600lm 940 |
| ηLB | 100 % |
| Φ ↓/↑ | 100 % / 0 % |
| UGR lat./long. | 14.6 / 18.6 |
| VDU | 65° < 1000cd/m ² |



Dimensions

| | | |
|----|---------|--|
| L | 1173 mm | Length |
| B | 340 mm | Width |
| H | 75 mm | Height |
| A1 | 1108 mm | Mounting distance single mounting |
| A3 | 65 mm | Mounting distance between luminaires in a light run arrangement |
| X | 65 mm | Distance cable infeed to the center of the luminaire on the X-axis |
| Y | 150 mm | Distance cable infeed to the center of the luminaire on the Y-axis |
